



Easier and Quicker component assembly and field installation –

Straight Length Component

Used horizontally and vertically – array of components available, designed to make a complete installation simple and quick.



NEW Channel Band Assembly

Used to enclose the inner-wall conduit and component locking system, providing a clean finished appearance for the overall installation; factory-assembled components with a one-piece assembly facilitates field installation.



NEW V-Band Component Locking Assembly

Used to secure adjacent components for a strong secure joint; factory-assembled components with a one-piece assembly facilitates field installation.



NEW Alignment Sleeve

Used to provide easier and quicker component assembly in centering adjacent components in the horizontal and vertical orientations and provides a backing for sealant applied to the flange keeping it in the intended location, along with adding strength to the overall joint connection.



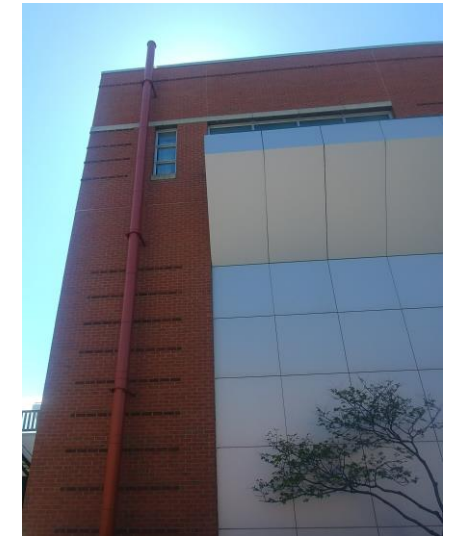
Straight Length Component

Used horizontally and vertically – array of components available, designed to make a complete installation simple and quick.

(Double-Wall Models VSI-IVSI Shown)

FINISHED ASSEMBLY

Completed installation provides a strong, uniformly aligned pressure stack.



Factory-Applied Painted Outer Wall Matching Building Façade.

Duravent's exclusive custom venting solutions can be tailored to your unique application requirements.